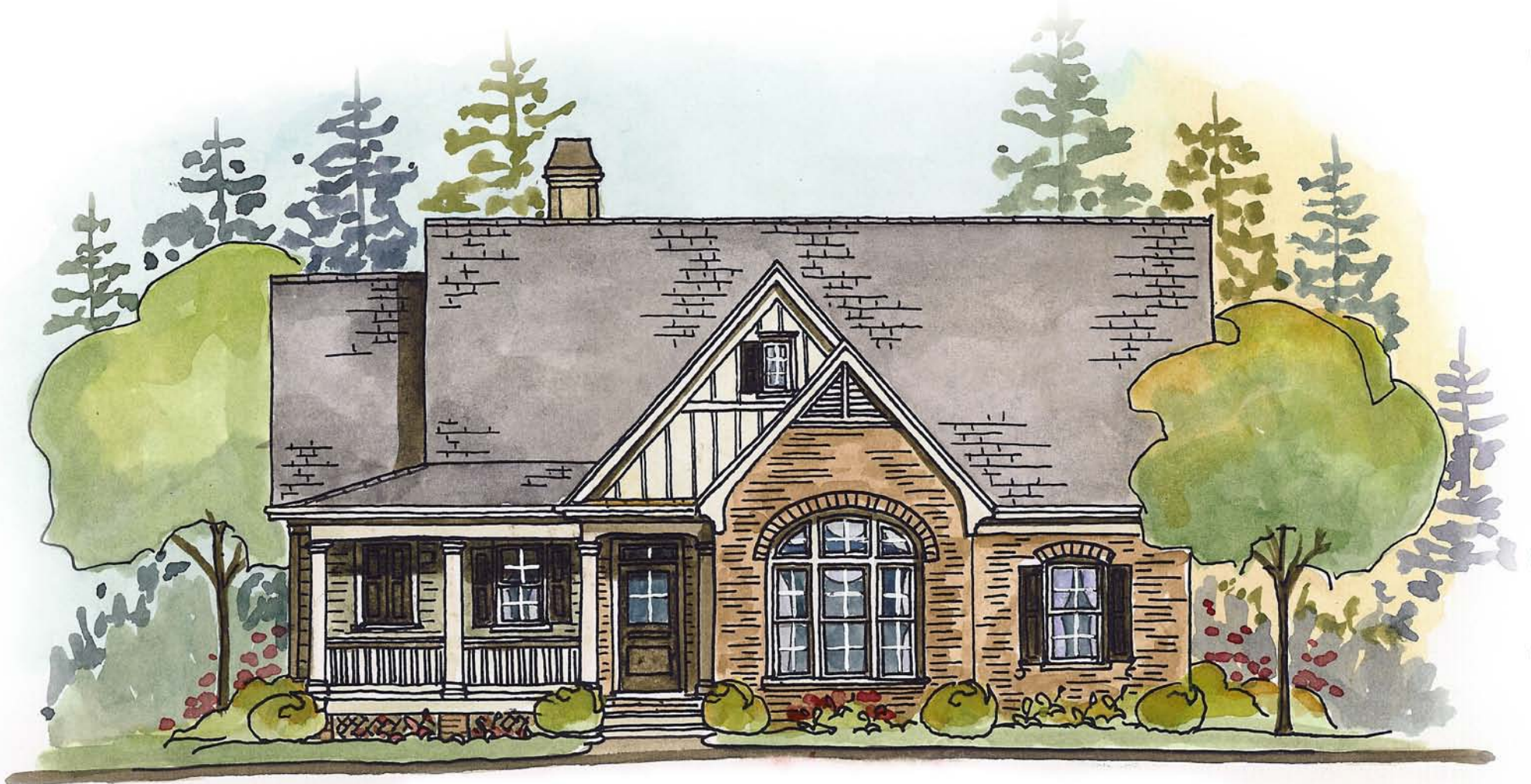


The Foxglove One



Callaway Gardens Living
www.CallawayGardensLiving.com



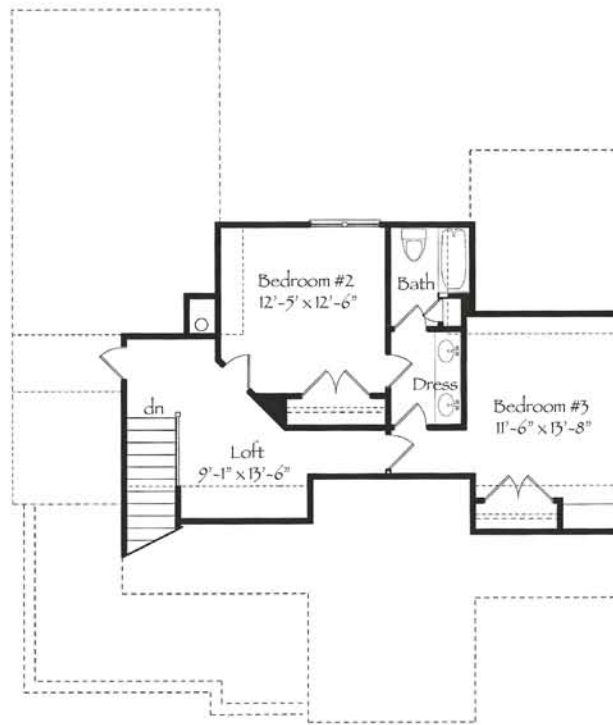
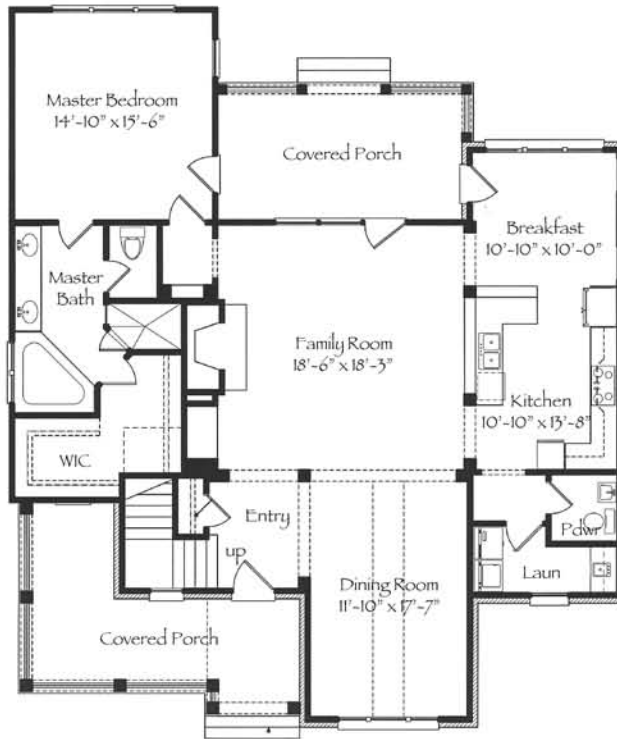
Floor Plans and Elevations are artist renderings only and are subject to change. All room sizes and square footage are approximate. Printed on recycled paper. Revised 09.01.09

Longleaf

AT CALLAWAY.



The Foxglove One



Mixed materials such as Brick and Board & Batten accent, with wood siding give this home its unique personality. Entering the home from the covered porch, is a dining room to the right which opens onto the family, kitchen, and breakfast rooms. The master suite is tucked away to the rear with private bath and walk-in closet. Upstairs you will find two bedrooms and a shared loft space.

Main Level	Upper Level	Total
1645 sf	652 sf	2297 sf