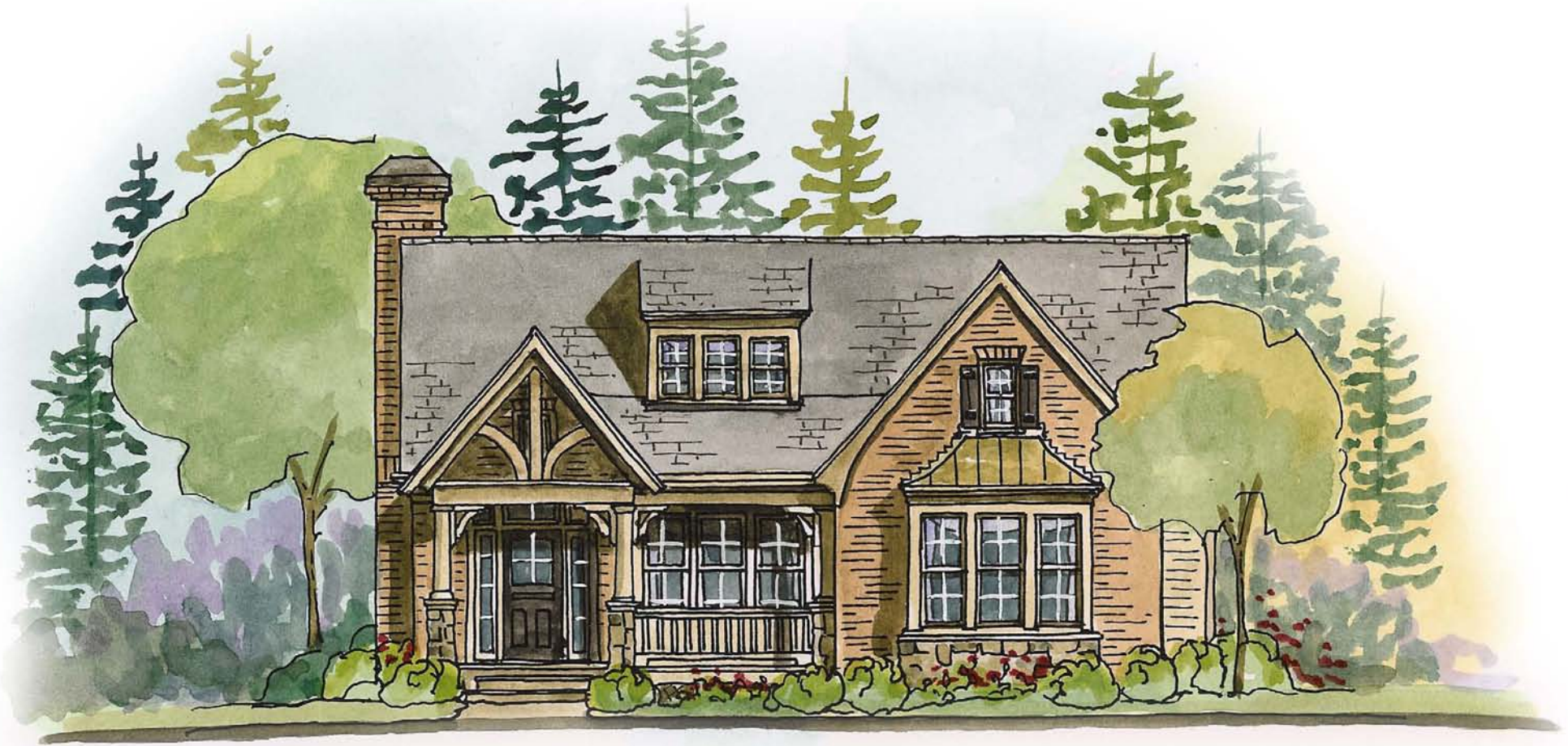
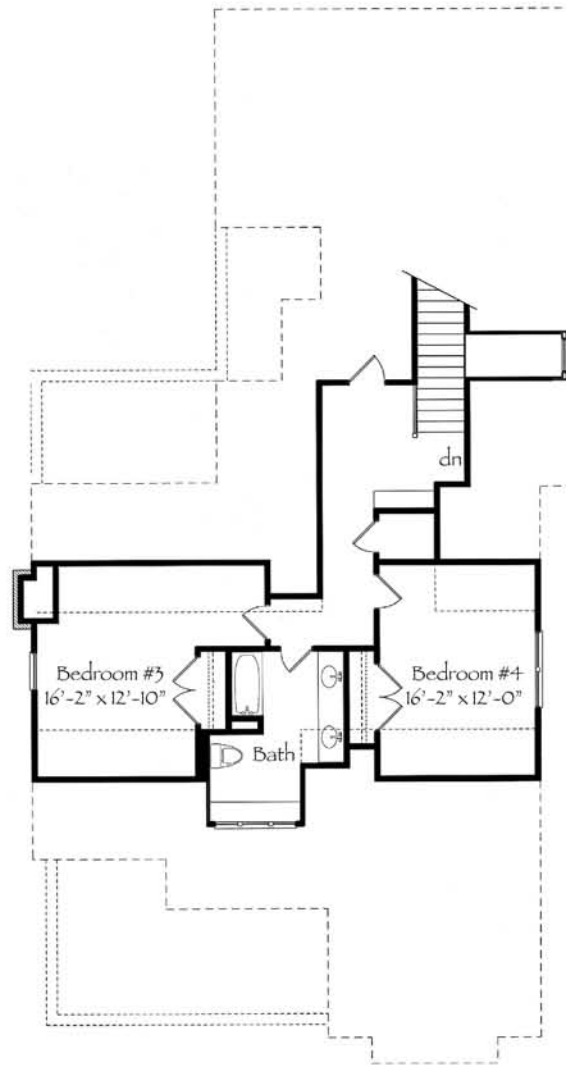
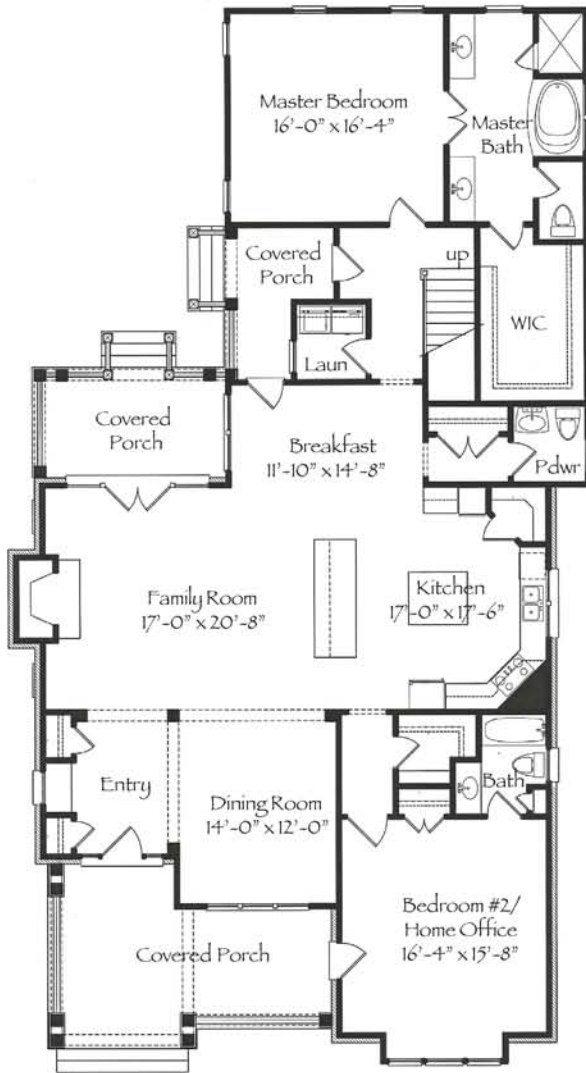


The Azalea Three



The Azalea Three



This craftsman brick and stone cottage has a large covered porch with vaulted timber framing. Once inside, you will find a formal dining room that opens into the spacious kitchen and family room. A large guest suite with box bay resides at the front of the home with its own personal bath. To the rear is the master suite that opens to a master bath with large walk-in closet. From the rear entrance, you will find a back stair leading to the upper level with two large bedrooms that share a bath.

| Main Level | Upper Level | Total |
|------------|-------------|---------|
| 2342 sf | 782 sf | 3124 sf |